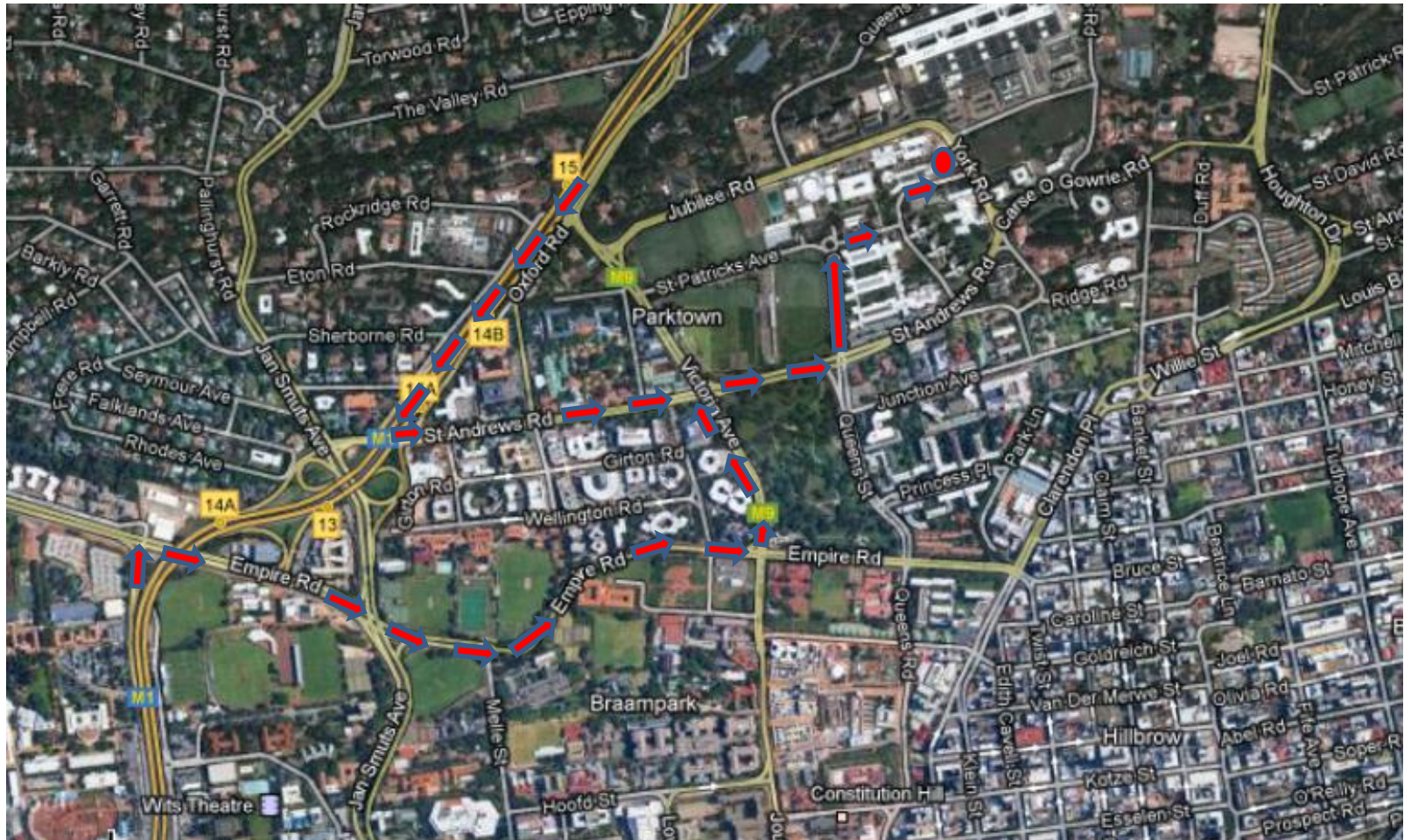




Directions to Wits School of Public Health

(Enter Wits Education Campus at 27 St. Andrews Road, Parktown).



Directions from Pretoria travelling along M1 South:

- Exit M1 South at St. Andrews, turn left travel east.
- Proceed along St. Andrews Road, cross over St. David's Place, Blackwood Avenue, Victoria Road towards Queens Street.
- Turn left at intersection of Queens Street and St. Andrews Road i.e. entrance to Wits Education Campus (**27 St. Andrews Road, Parktown**).
- **Proceed north on campus towards traffic circle at end of Queens Street with Wits Education Campus.**
- **Enter circle and exit right, proceed to T-Junction.**
- **At T-Junction turn left, follow road to School of Public Health (large face brick building on left hand side).**

Directions from Johannesburg travelling along M1 North:

- Exit M1 North at Empire Road, turn right and travel east.
- Proceed east along Empire Road, cross over Jan Smuts, Melle Street towards Victoria Road.
- Turn left into Victoria, travel north towards St. Andrews Road.
- Turn right into St. Andrews Roads, travel east towards Queens Street.
- At intersection of St. Andrews and Queens Road turn left, enter Wits Education Campus (27 St. Andrews Road, Parktown).
- Thereafter follow directions as **indicated above**.